

CIVA Training Courses Catalogue

-

2015 Edition

Reference: ENDE15L001 rev01



Table of Contents

1	PREAMBLE	3
2	INTRODUCTION	4
3	CHOOSING THE RIGHT COURSE	4
	3.1 INTER-COMPANY TRAINING SESSIONS:	4
	3.1.1 <i>Five days Inter-company training courses:</i>	4
	3.1.2 <i>Two days Inter-company training courses:</i>	5
	3.2 DEDICATED INTRODUCTORY COURSES:	5
	3.3 DEDICATED ADVANCED COURSES:	5
	3.4 SHORT “ONLINE” INTRODUCTORY COURSE:	5
4	PROGRAM OF SESSIONS	6
	4.1 INTER-COMPANY INTRODUCTORY COURSE: ”INTRODUCTION TO CIVA & APPLICATIONS”	6
	4.1.1 <i>Schedule for 5 days of training in EXTENDE S.A facilities:</i>	6
	4.1.2 <i>Schedule for 2 days of ET training in EXTENDE S.A facilities:</i>	8
	4.1.3 <i>Schedule for 2 days of RT and CT training in EXTENDE S.A facilities:</i>	9
	4.1.4 <i>Schedule for 2 days of GWT training in EXTENDE S.A facilities:</i>	10
	4.1.5 <i>Schedule for 3 days of UT + 1 day ET or RT training in USA (Fairfield Inn, Malta, NY State):</i>	11
	4.2 DEDICATED INTRODUCTORY COURSE: “INTRODUCTION TO CIVA & APPLICATIONS”	13
	4.3 DEDICATED ADVANCED COURSES: “TO GO FURTHER WITH CIVA FOR YOUR APPLICATIONS”	15
	4.4 SHORT ONLINE COURSE: “START WITH CIVA“	16
5	UPCOMING INTER-COMPANY COURSES	17
6	HOW TO REACH US?	18
	6.1 TRAININGS AT EXTENDE S.A FACILITIES (HEAD OFFICE IN MASSY)	18
	6.2 TRAININGS AT EXTENDE S.A FACILITIES (GRENOBLE OFFICE)	19
	6.3 TRAININGS NEAR EXTENDE INC. FACILITIES	20
7	TO FIND A HOTEL CLOSE TO OUR FACILITIES	21
	7.1 LIST OF SUITABLE HOTELS FOR OUR MASSY FACILITIES	21
	7.2 LIST OF SUITABLE HOTELS FOR OUR GRENOBLE FACILITIES	22
	7.3 LIST OF SUITABLE HOTELS FOR THE FAIRFIELD INN FACILITIES	23

1 Preamble

Thank you for your interest in CIVA training sessions!

Last year, once again, most of our CIVA training sessions were full and we would like to thank you for your participations.

Since CIVA offers more and more solutions and new modules, we want the CIVA users' community to take advantage of this software and all capabilities. By participating in these training courses, you will be able *to maximize the benefits of CIVA*, know its limitations and get sufficient knowledge of the calculation models to *perform more efficient simulations*.

EXTENDE provides *comprehensive training courses* for CIVA software, the expertise and modelling platform for NDT. These courses are intended for *CIVA users, future CIVA users or people wishing to know the possibilities of the software*.

It is recommended that participants have basic knowledge in the field of NDT. The courses described in this catalog propose periods of lectures and *numerous periods of practical use of the software* on a PC through a set of application examples.

2 Introduction



Six modules are now available in CIVA: UT, ET, RT, CT, GWT, and CIVA ATHENA2D.

More information about these modules is available on our website at <http://www.extende.com/what-is-civa>.

All our different CIVA courses will focus on the principal new functionalities of CIVA 11 and also on the new modules available in CIVA. That is the reason why we decided to diversify the types of training available.

3 Choosing the Right Course

Different users require different knowledge and have different expectations of CIVA. That's why EXTENDE provides different kinds of training courses that will allow the trainee to choose the one that fits his/her needs. Details of all the courses are described in § 4.

EXTENDE provides four kinds of training courses:

3.1 Inter-company training sessions:

You will find detailed programs in this catalogue. Such sessions last 2, 4 or 5 days and are held in our facilities.

3.1.1 Five days Inter-company training courses:

Following the feedback received from the past sessions and in order to have enough time to go into the software in depth, CIVA UT inter-company sessions last 3.5 to 4 days. In these intercompany sessions, an additional module is proposed optionally, the duration of the full course being 5 days.

For each session EXTENDE proposes one of the following extensions: CIVA RT/CT, CIVA ET, CIVA GWT or CIVA ATHENA2D (see schedule in §5).

The presentation of the addition module will take place at the afternoon of the 4th day.

For people interested only in the additional module, it is possible to register for only the last 1.5 days.

For people interested only in the UT module, it is possible to register for only the first 4 days.

3.1.2 Two days Inter-company training courses:

This option is dedicated to people who want to be trained only in a specific module other than the CIVA UT one.

3.2 Dedicated introductory courses:

This type of training session can be organized, either at the customer facilities or in EXTENDE premises, depending on the customer preference. To take advantage of this option, the sessions are scheduled for a maximum of six people.

We can provide training sessions for more than six participants but in that case we will provide two trainers.

Depending on the CIVA modules to be covered, these sessions last from 2 to 5 days.

3.3 Dedicated advanced courses:

With this option, a questionnaire is sent before the start of the session to guide the program according to your priorities. Training can take place on the company site or in our facilities. The customers will send some specific application cases a few days before the beginning of the session so that the trainer can prepare the modeling of these cases. It is recommended to have first followed an introductory course before an advanced one.

3.4 Short “online” introductory course:

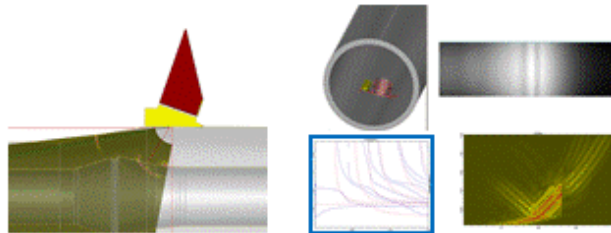
This session is done via a "WebEx" conference and last around half a day. This session helps to quickly learn the basics of the software in order to be efficient as soon as you start using it. It is recommended to follow with a complete course a few months after this short introductory one to have a larger overview of CIVA capabilities.

4 Program of sessions

4.1 Inter-company introductory course: "Introduction to CIVA & applications"

4.1.1 Schedule for 5 days of training in EXTENDE S.A facilities:

CIVA
N·D·E | 11



Length: 5 days

<p>Day 1:</p> <ul style="list-style-type: none"> - General introduction on CIVA - Presentation of CIVA UT/Beam computation - Exercises of practical applications with CIVA UT/Beam computation 	<p>Day 2:</p> <ul style="list-style-type: none"> - Presentation of CIVA UT/Defect Response - Exercises of practical applications with CIVA UT/Defect Response
<p>Day 3:</p> <ul style="list-style-type: none"> - Presentation on Phased-Array UT sensors simulation settings - Exercises of practical applications with Phased-Array UT sensors 	<p>Day 4:</p> <ul style="list-style-type: none"> - Presentation and practical applications of the POD module - Build CIVA UT configurations with less guidelines - Open discussions on CIVA use and applications - Presentation of one additional CIVA module (RT/CT or ET or GWT or CIVA ATHENA2D). - Practice on one additional CIVA module (RT/CT or ET or GWT or CIVA ATHENA2D).
<p>Day 5:</p> <ul style="list-style-type: none"> - Practice on one additional CIVA module (RT/CT or ET or GWT or CIVA ATHENA2D). 	

Objectives: After the course, the trainees will be able to build a CIVA simulation configuration autonomously; they will obtain sufficient knowledge of the calculation models to have clear ideas about the capabilities and the limits of the software.



Training documents: The trainees will receive a paper and electronic copy of the training book and electronic copy of the presentations.

Price: 450 € (not including taxes)/person/day for courses in EXTENDE facilities.

When: See Part 5 for the 2015 schedule. Additional sessions can be organized on demand if enough people are interested.

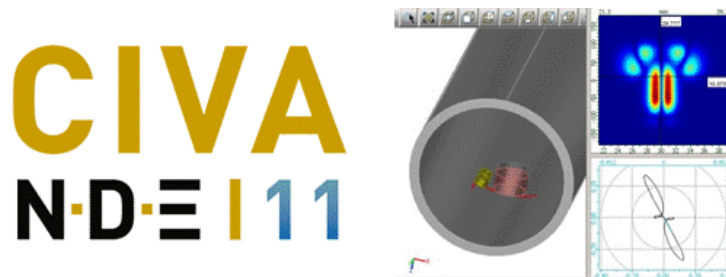
Organization details: The sessions take place in EXTENDE premises, Le Bergson, 15 Avenue Emile Baudot, 91300 Massy, France or 155 Cours Berriat 38000 Grenoble, France.

EXTENDE provides sufficient computers to use CIVA in groups of 1 or 2. Trainees are allowed to bring their own laptop, however CIVA is easiest to use with a graphic resolution of at least 1280x1024.

EXTENDE delivers all the necessary licenses to use CIVA during the course.

EXTENDE will provide lunch each day.

4.1.2 Schedule for 2 days of ET training in EXTENDE S.A facilities:



Length: 2 days

<u>Day 1:</u>	<u>Day 2:</u>
<ul style="list-style-type: none"> - General introduction on CIVA - Presentation on CIVA Eddy Current (ET) module - Exercises of practical applications with CIVA ET 	<ul style="list-style-type: none"> - Exercises of practical applications with CIVA ET - Presentation and practical applications of the POD module - Build CIVA ET configurations with less guidelines - Open discussions on CIVA use and applications

Objectives: After the course, the trainees will be able to build a CIVA simulation configuration autonomously; they will obtain sufficient knowledge of the calculation models to have clear ideas about the capabilities and the limits of the software.

Training documents: The trainees will receive a paper and electronic copy of the training book and electronic copy of the presentations.

Price: 450 € (not including taxes)/person/day for courses in EXTENDE facilities.

When: See Part 5 for the 2015 schedule. Additional sessions can be organized on demand if enough people are interested.

Organization details: The sessions take place in EXTENDE premises, 155 Cours Berriat 38000 Grenoble, France

EXTENDE provides sufficient computers to use CIVA in groups of 1 or 2.

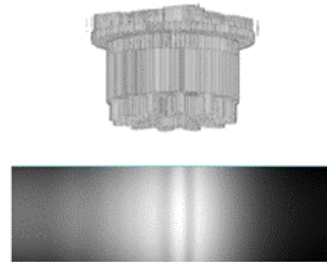
Trainees are allowed to bring their own laptop, however CIVA is easiest to use with a graphic resolution of at least 1280x1024.

EXTENDE delivers all the necessary licenses to use CIVA during the course.

EXTENDE will provide lunch each day.

4.1.3 Schedule for 2 days of RT and CT training in EXTENDE S.A facilities:

CIVA
N·D·E | 11



Length: 2 days

<u>Day 1:</u>	<u>Day 2:</u>
<ul style="list-style-type: none"> - General introduction on CIVA - Presentation of the CIVA radiography (RT) module - Exercises of practical applications with CIVA RT 	<ul style="list-style-type: none"> - Build CIVA RT configuration with less guidelines - Presentation and practical applications of the POD module - Introduction to CIVA tomography (CT) module - Exercises of practical applications with CIVA CT - Open discussions on CIVA use and applications

Objectives: After the course, the trainees will be able to build a CIVA simulation configuration autonomously; they will obtain sufficient knowledge of the calculation models to have clear ideas about the capabilities and the limits of the software.

Training documents: The trainees will receive a paper and electronic copy of the training book and electronic copy of the presentations.

Price: 450 € (not including taxes)/person/day for courses in EXTENDE facilities.

When: See Part 5 for the 2015 schedule. Additional sessions can be organized on demand if enough people are interested in.

Organization details: The sessions take place in EXTENDE premises, Le Bergson - 15 Avenue Emile Baudot - 91 300 Massy, France.

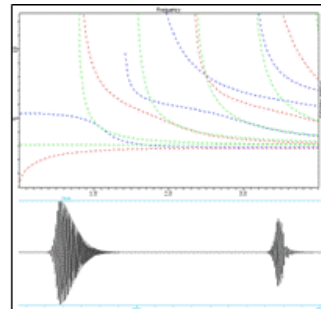
EXTENDE provides sufficient computers to use CIVA in groups of 1 or 2.

Trainees are allowed to bring their own laptop, however CIVA is easiest to use with a graphic resolution of at least 1280x1024.

EXTENDE delivers all the necessary licenses to use CIVA during the course.

EXTENDE will provide lunch each day.

4.1.4 Schedule for 2 days of GWT training in EXTENDE S.A facilities:



Length: 2 days

<p><u>Day 1:</u></p> <ul style="list-style-type: none"> - General introduction on CIVA - Presentation of the CIVA Guided Waves (GWT) module - Exercises of practical applications with CIVA GWT 	<p><u>Day 2:</u></p> <ul style="list-style-type: none"> - Exercises of practical applications with CIVA GWT - Open discussions on CIVA use and applications
---	--

Objectives: After the course, the trainees will be able to build a CIVA simulation configuration autonomously; they will obtain sufficient knowledge of the calculation models to have clear ideas about the capabilities and the limits of the software.

Training documents: The trainees will receive a paper and electronic copy of the training book and electronic copy of the presentations.

Price: 450 € (not including taxes)/person/day for courses in EXTENDE facilities.

When: See Part 5 for the 2015 schedule. Additional sessions can be organized on demand if enough people are interested.

Organization details: The sessions take place in EXTENDE premises, Le Bergson - 15 Avenue Emile Baudot – 91300 Massy, France.

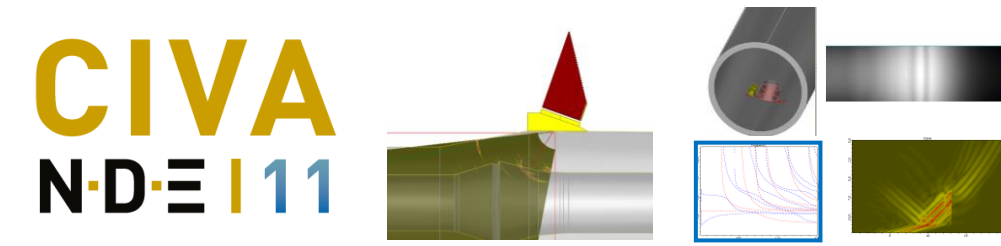
EXTENDE provides sufficient computers to use CIVA in groups of 1 or 2.

Trainees are allowed to bring their own laptop, however CIVA is easiest to use with a graphic resolution of at least 1280x1024.

EXTENDE delivers all the necessary licenses to use CIVA during the course.

EXTENDE will provide lunch each day.

4.1.5 Schedule for 3 days of UT + 1 day ET or RT training in USA (Fairfield Inn, Malta, NY State):



Length: 4 days

<p>Day 1:</p> <ul style="list-style-type: none"> - General introduction on CIVA - Presentation of CIVA UT/Beam computation - Exercises of practical applications with CIVA UT/Beam computation 	<p>Day 2:</p> <ul style="list-style-type: none"> - Presentation of CIVA UT/Defect Response - Exercises of practical applications with CIVA UT/Defect Response
<p>Day 3:</p> <ul style="list-style-type: none"> - Presentation on Phased-Array UT sensor simulation settings - Exercises of practical applications with Phased-Array UT sensors - Presentation and practical applications of the POD module in CIVA UT 	<p>Day 4:</p> <ul style="list-style-type: none"> - Presentation of CIVA Eddy Current (ET) module or CIVA RT module* - Exercises of practical applications with CIVA ET or CIVA RT* <p><i>*One session is dedicated to ET, one to RT, see Part 5 for 2015 calendar</i></p>

For people interested only in the UT module, it is possible to register only for the first 3 days.

Two sessions are scheduled for training sessions in USA: One will be dedicated to the UT/RT, the second one to the UT/ET.

For the dates please refer to chapter 5.

Objectives: After the course, the trainees will be able to build a CIVA simulation configuration autonomously; they will obtain sufficient knowledge of the calculation models to have clear ideas about the capabilities and the limits of the software.

Training documents: The trainees will receive a paper and electronic copy of the training book and electronic copy of the presentations.

Price: US\$ 500 (not including taxes)/person/day for courses in Fairfield Inn, Malta, NY near EXTENDE Inc. facilities.

When: See Part 5 for the 2015 schedule. Additional sessions can be organized on demand if enough people are interested.



Organization details: The sessions take place at the Fairfield Inn hotel, Malta, NY near EXTENDE Inc Premises.

EXTENDE provides sufficient computers to use CIVA in groups of 1 or 2.

Trainees are allowed to bring their own laptop, however CIVA is easiest to use with a graphic resolution of at least 1280x1024.

EXTENDE delivers all the necessary licenses to use CIVA during the course.

EXTENDE will provide lunch each day.

4.2 Dedicated introductory Course: “Introduction to CIVA & applications”

EXTENDE proposes dedicated introductory training sessions organized from 2 to 5 days, depending on the modules in use and the interest of the customer. **Based on the standard program described above in 4.1**, the schedule is adapted to the customer request. This type of training session can be organized, either at the customer facilities or in EXTENDE premises, depending on the customer preference. At the end of the course, the last day or half-day can be dedicated to the preparation of customer cases, but without advanced preparation from EXTENDE.

Length: 2 to 5 days

Objectives: After the course, the trainees will be able to build a CIVA simulation configuration autonomously; they will obtain sufficient knowledge of the calculation models to have clear ideas about the capabilities and the limits of the software.

Training documents: The trainees will receive a paper and electronic copy of the training book and electronic copy of the presentations.

Price: 1350 €* (not including taxes)/day or US\$ 1500*/day if the training session takes place in USA or Canada.

* Price for a group of 6 people maximum.
Beyond this number of participants, additional costs will be applied.

When: Organized on demand if our trainers are available.

Organization details:

- If the session takes place in EXTENDE we provide computers to use CIVA in groups of 1 or 2. Trainees are allowed to bring their own laptop, however CIVA is easiest to use with a graphic resolution of at least 1280x1024. EXTENDE delivers all the necessary licenses during the course. EXTENDE will provide lunch each day.
- If the session is organized on a customer site, the trainer travel fees will be charged at a price defined in the official proposal. The customer is in charge of the organization of the training room (computers, projector, lunch, etc.). EXTENDE delivers all the necessary licenses to use CIVA during the course.
- If the session is organized at the Fairfield Inn facility (Malta, NY) in USA, additional fees will be charged at a price defined in the official proposal for computers and facility renting. We provide computers to use CIVA in groups of 1 or 2. Trainees are allowed to bring their own laptop, however CIVA is easiest



to use with a graphic resolution of at least 1280x1024. EXTENDE delivers all the necessary licenses during the course. EXTENDE will provide lunch each day.

4.3 Dedicated advanced courses: “To go further with CIVA for your applications”

EXTENDE completes its offer of training courses with **more customized sessions** on particular subjects that will need a detailed description of the customer’s targeted configurations.

This format is quite open. It allows, thanks to a preparation form completed by the customer, to focus the course on particular points from the basic program, as well as to define specific application cases. These configurations will be communicated by the customer at least 15 days before the beginning of the session and EXTENDE will plan a specific preparation work with some examples. Such a session cannot last more than 5 consecutive days, but, on customer demands, several sessions can be defined and organized at different periods.

Price: To be defined according to the course duration and the necessary preparation time.

When: Organized on demand

Organization details:

- If the session takes place in EXTENDE or at a local facility near EXTENDE Inc premises, we provide computers to use CIVA in groups of 1 or 2. Trainees are allowed to bring their own laptop, however CIVA is easiest to use with a graphic resolution of at least 1280x1024. EXTENDE delivers all the necessary licenses during the course. EXTENDE will provide lunch each day.
- If the session is organized on a customer site, the trainer travel fees will be charged at a price defined in the official proposal. The customer is in charge of the organization of the training room (computers, projector, lunch, etc.). EXTENDE delivers all the necessary licenses to use CIVA during the course.

4.4 Short online course: “Start with CIVA”

EXTENDE can provide new customers with a tutorial course for software application. This is a very short course, based on a presentation, demonstration, and a practical application on a very simple configuration.

This session is done remotely via a "WebEx" conference whose purpose is to explain to clients the overall functionality of the software.

The content of the short course is the following:

- CIVA Overview,
- Brief presentation of the graphical user interfaces
- Demo: How to prepare a configuration, run the computation and save,
- Demo: Introduction to imaging,
- Demo: Presentations of the basic analysis tools,
- Get the client started on a simple example.

The duration of this session is 3 hours for one module. Another session of 3 hours, which can be delivered at a later time, is necessary if all the modules are undertaken.

Price:

- 500 €/3hours – 900 €/6hours

- US\$700/3hours – US\$1300/6hours for US and Canadian customers

5 Upcoming Inter-company courses

The dates of the upcoming intercompany training courses for 2015 are given hereafter.

The costs and the program of these sessions are given in chapter 4.

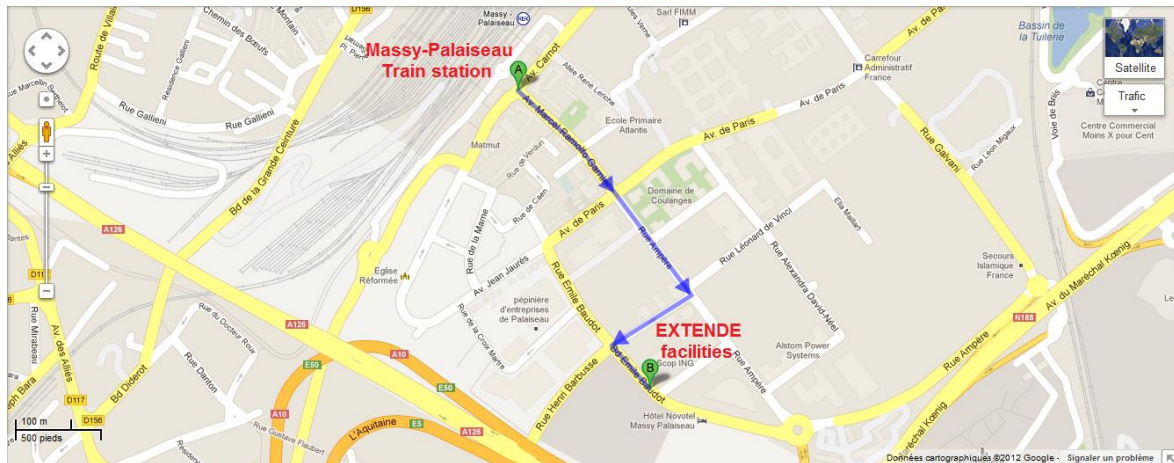
These courses are taught in English (excepted if only French speaking people or Spanish speaking people attend) and take place at EXTENDE SA (France) or near EXTENDE Inc. (USA) facilities.

For people wishing to be trained only on the UT module, the training will last four days and not five days. The last day is focused on another technique.

Training sessions	Dates	Location
4 days UT + 1 day ET	February 9 to 13	Grenoble, France
4 days UT + 1 day CIVA ATHENA2D	March, 16 to 20	Massy, France
2 days RT	March 23 to 24	Massy, France
3 days UT + 1 day RT	April 14 to 17	Malta, NY, USA
4 days UT + 1 day RT	June 15 to 19	Massy, France
2 days GWT	September 17 to 18	Massy, France
5 days UT + CIVA analysis	September 21 to 25	Massy, France
3 days UT + 1 day ET	October 20 to 23	Malta, NY, USA
4 days UT + 1 day GWT	November 23 to 27	Massy, France
2 days ET	December 17 to 18	Grenoble, France

6 HOW TO REACH US?

6.1 TRAININGS AT EXTENDE S.A FACILITIES (head office in Massy)



EXTENDE is situated at 17 kms south from Paris, in the city of Massy, France.

[Find us on Google Maps](#)

Coming by car:

From Paris, the easiest way is to take the Highway A6-A10, take the exit “Massy”. The journey time is approximately 20 minutes from the south of Paris.

Getting here by public transport:

The trains “RER B” and “RERC” go directly from Paris to Massy. The train stop is Massy-Palaiseau train station. EXTENDE S.A. facilities are only 750m away from the train station

Contact us
EXTENDE S.A:
Our facilities are in

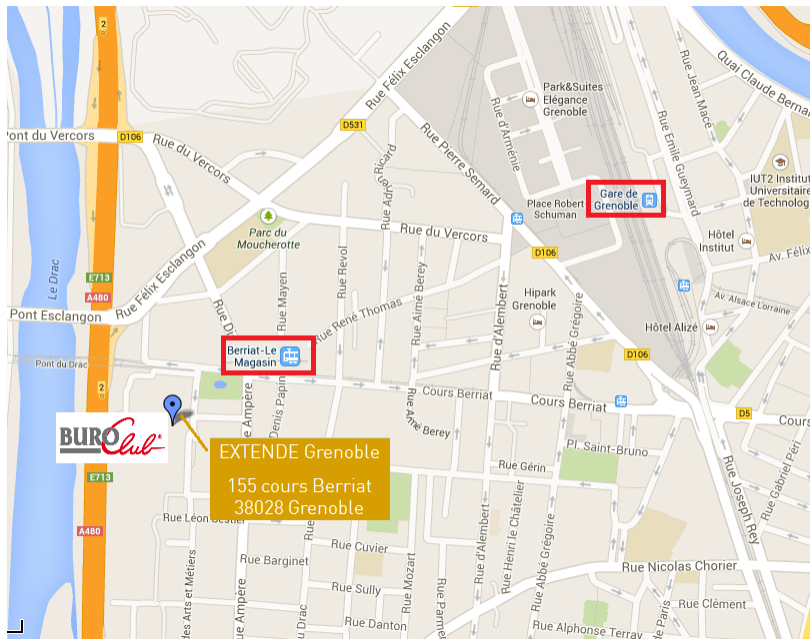
Le Bergson
15 Avenue Emile Baudot
91 300 Massy
France

Contact@extende.com
Fax: +33 (0)9 72 13 42 68

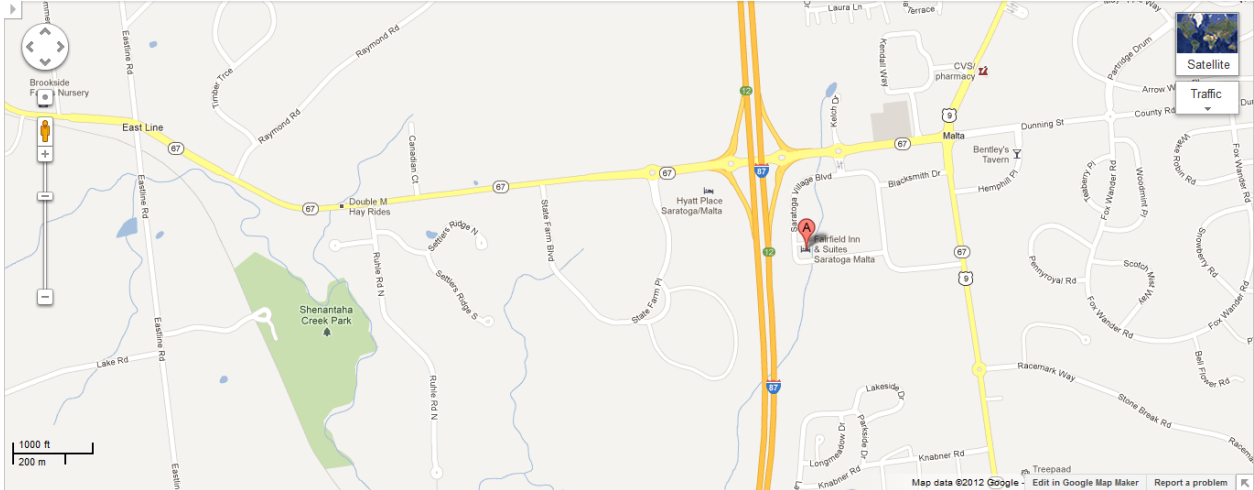
6.2 TRAININGS AT EXTENDE S.A FACILITIES (Grenoble office)

Our facilities are in:

EXTENDE Grenoble
Bâtiment BURO Club Grenoble centre
155 Cours Berriat CS70022
38 028 Grenoble
France



6.3 TRAININGS NEAR EXTENDE INC. FACILITIES



Approximately 20 miles north of Albany International Airport

[Find us on Google Maps](#)

Coming by car:

Take I-87 to exit 12 onto Route 67 East. Turn onto Saratoga Village Boulevard at the round-about and take it till you reach the Fairfield Inn.

Contact us EXTENDE Inc.:

PO Box 461
Ballston Spa, NY 12020
USA

Contactus@extende.com
Fax 518- 602-1368

7 TO FIND A HOTEL CLOSE TO OUR FACILITIES

7.1 List of suitable Hotels for our Massy Facilities

Name	Address	Website	Tel	Email	Comment
Novotel Massy-Palaiseau	18-20 Rue Emile Baudot 91120 Palaiseau	http://www.accorhotels.com/gb/hotel-0386-novotel-massy-palaiseau/index.shtml	+33 1 64 53 90 00	H0386@accor.com	In front of our facilities
Mercure Paris Massy Gare TGV	21 Avenue Carnot 91886 Massy	http://www.accorhotels.com/fr/hotel-1176-mercure-paris-massy-gare-tgv/index.shtml	+33 1 69 32 80 20	H1176@accor.com	In front of Massy train station
Tulip Inn	23 Avenue des alliés 91120 Palaiseau	http://www.goldentulip.com/fr/hotels/tulip-inn-massy-palaiseau-residence	+33 1 73 62 11 22	g.m@tulipinnmassypalaiseau.com	Near our facilities
Hotel Cujas - Panthéon	18 Rue Cujas 75005 Paris	http://hotelcujas.com/	+33 1 43 54 58 10	hotel-cujas-pantheon@wanadoo.fr	Downtown Paris, direct connection to Massy with RER B
Hotel Beauvoir	43 Avenue Georges Bernanos 75005 Paris	http://www.hotel-beauvoir.fr/f_fr.html	+33 1 43 25 57 10	contact@hotel-beauvoir-paris.com	Downtown Paris, direct connection to Massy with RER B
Hôtel ibis Alésia Montparnasse		http://www.ibishotel.com/fr/hotel-0959-ibis-paris-alesia-montparnasse-14eme/location.shtml	+33 1 53 90 40 10	H0959@ACCOR.COM	Downtown Paris, direct connection to Massy with RER B

7.2 List of suitable Hotels for our Grenoble Facilities

Name	Adress	Website	Tel	Email	Comment
Novotel Grenoble Centre	7 Place Robert Schuman 38000 GRENOBLE	http://www.accorhotels.com/gb/hotel-1624-novotel-grenoble-centre/index.shtml	+33 4 76 70 84 84	H1624@accor.com	7mn walking from our office Close to the train station
Best Western Grenoble	10 Place De La Gare 38000 GRENOBLE	http://www.bestwesternterminus.com/index_en.html	+33 4 76 87 24 33	terminush@aol.com	10 mn walking/ 4 mn tramway from our office and Grenoble centre. Close to the train station
Hôtel Institut	10 Rue Louis Barbillon 38000 GRENOBLE	http://www.institut-hotel.fr/en/	+33 4 76 46 36 44	contact@institut-hotel.fr	10 mn walking/ 4 mn tramway from our office and Grenoble centre. Close to the train station
Hôtel des Alpes	45 Avenue Félix Viallet 38000 GRENOBLE	http://www.hotel-des-alpes.fr/index.php/english-version	+33 4 76 87 00 71	hotel.desalpes@wanadoo.fr	10 mn walking/ 4 mn tramway from our office and Grenoble centre. Close to the train station
Ibis Grenoble Centre	5 Rue de Miribel Les Trois Dauphins Place Félix Poulat 38000 GRENOBLE	http://www.ibis.com/fr/hotel-0612-ibis-grenoble-centre/index.shtml	+33 4 76 47 48 49	H0612@accor.com	Downtown Grenoble. 25 mn walking/10 mn tramway from our office.

7.3 List of suitable Hotels for the Fairfield Inn Facilities

Name	Address	Website	Tel	Email	Comment
Fairfield Inn & Suites	101 Saratoga Village Boulevard Malta, NY 12020	http://www.marriott.com/hotels/travel/albam-fairfield-inn-and-suites-saratoga-malta/	518-899-6900	sales@fairfield-saratoga.com	Training facilities are there
Hyatt Place	20 State Farm Place Malta, NY, 12020	http://saratogamalta.place.hyatt.com/en/hotel/home.html	518-885-1109	hyattplace@hyatt.com	Close to training facility, but still need a car
The Medberry Inn and Spa	48 Front Street Ballston Spa, NY 12020	http://www.medberyinnandspa.com/	518-885- 7727	relax@medberyinnandspa.com	10 mn drive to training, restaurants on same block
Hampton Inn & Suites Saratoga Springs Downtown	25 Lake Avenue, Saratoga Springs, New York, 12866	http://hamptoninn3.hilton.com/en/hotels/new-york/hampton-inn-and-suites-saratoga-springs-downtown-ALBSPHX/index.html	518-584-2100	https://secure.hilton.com/en/hp/feedback/index.html;jsessionid=UE0KFAMFLK-SUCCSQA003-MQQ	15 mn drive to training, restaurant on site, many shops and restaurants nearby