



## ***TraiNDE UT v1.1***

***The first virtual mock-up for NDE inspectors***

After the first commercial release in September 2019 of this brand new product, TraiNDE UT keeps evolving and a new version is already available. **TraiNDE UT v1.1** improves the user experience, especially in the management of the tactile interactivity on the virtual mock-up screen. Details of the new features are given hereafter :

### ***Probe detection***

Extensive work has been performed to improve the probe detection with the touch screen. TraiNDE UT now manages the probe contact independently from hand touches on the screen.

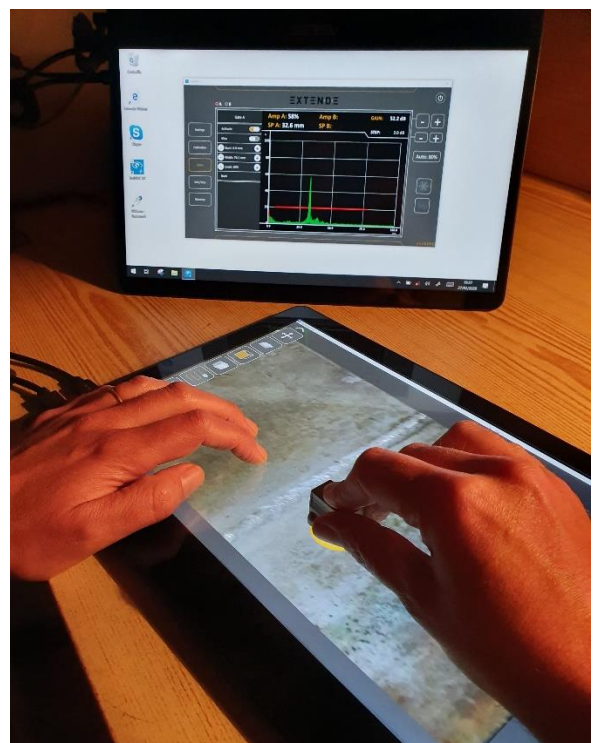
Now **feel free to put your hands** on the screen while you are scanning the probe, the signal display remains really fluid, “living” and realistic.

It makes it possible to use any feature while scanning the probe: using marking tools does not require anymore holding the probe off of the virtual mock-up.

### ***Probe Halo***

No more questioning if your probe is properly detected thanks to the “halo” displayed: Track and check the probe’s position and motion on the virtual mock-up.

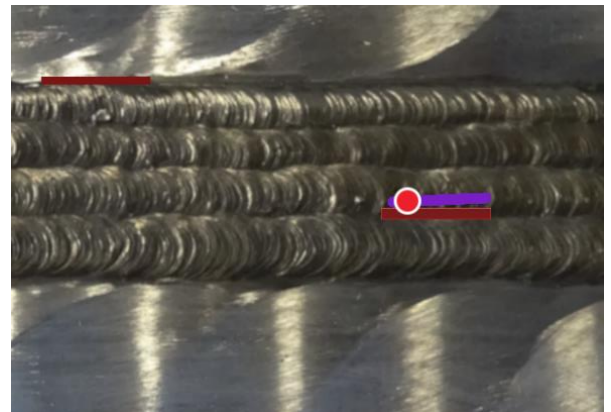
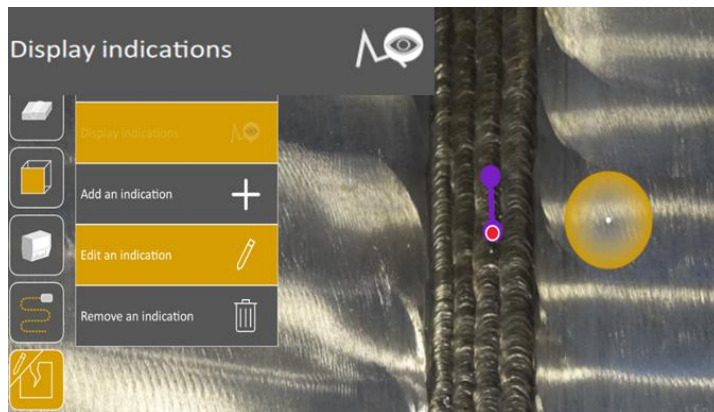
Furthermore, the **probe is now tracked anywhere** on the mock-up screen.



### ***New feature: “Mark Indications”***

A new feature has been added in TraiNDE 1.1 in order to mark indications by **creating multi-lines on the virtual mock-up** while scanning the probe and checking the signals.

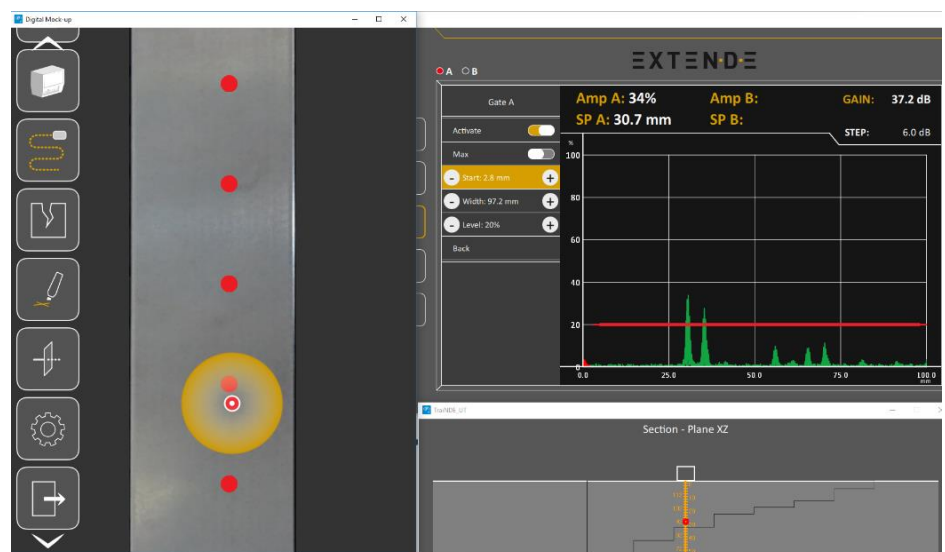
Once done, it can be compared to the actual defect profile (in red) by displaying the “defect”.



### Mock-up screen management

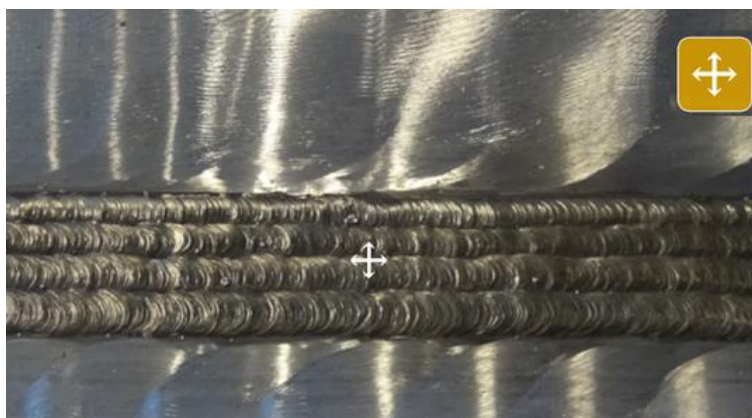
For **more flexibility** with the mock-up display, it is now possible to switch between Full Screen and window modes.

You can also **setup the screen** on which you display the mock-up.



### And also:

**Moving the component** when it is larger than the screen becomes more intuitive.



It is also now easier to scroll and select the different exercises from the whole list of applications or to exit from one of them.

More informations on the TrainDE features:

<http://trainde.extende.com/>

And visit our YouTube channel:

<https://www.youtube.com/playlist?list=PLF7b8feEUKf2C88iAb7XBgFGpYcNdCJM0>